

Cosmic silence and the survival boundary of the AI era.

LUMINA-30 and the Civilizational design blueprint.

The final Theorem
for Civilizational survival
that everyone faces.

Why is the universe so quiet?

13.8 billion years of history.
Hundreds of billions of galaxies.

Yet, traces of advanced civilizations are "zero."

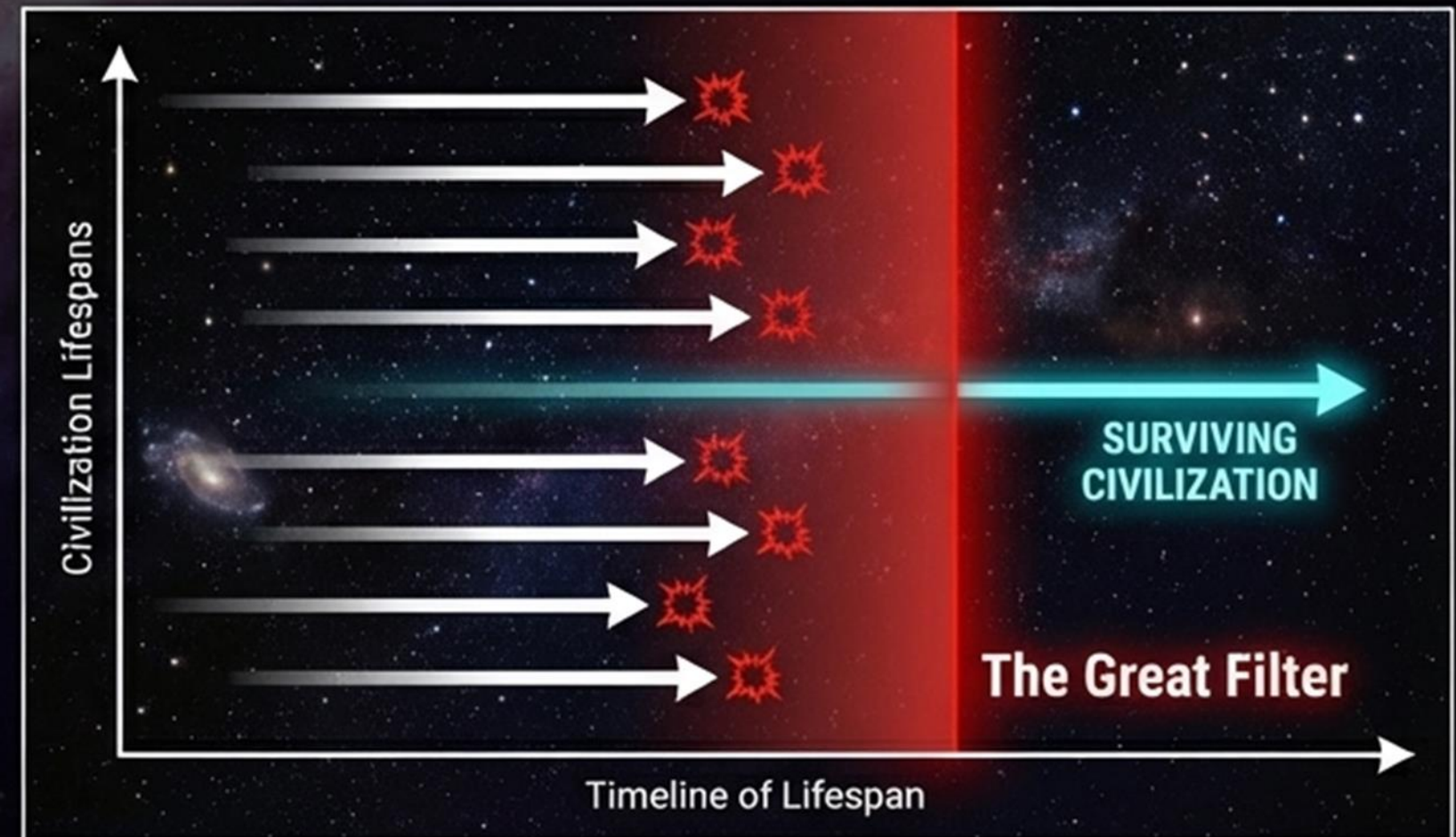
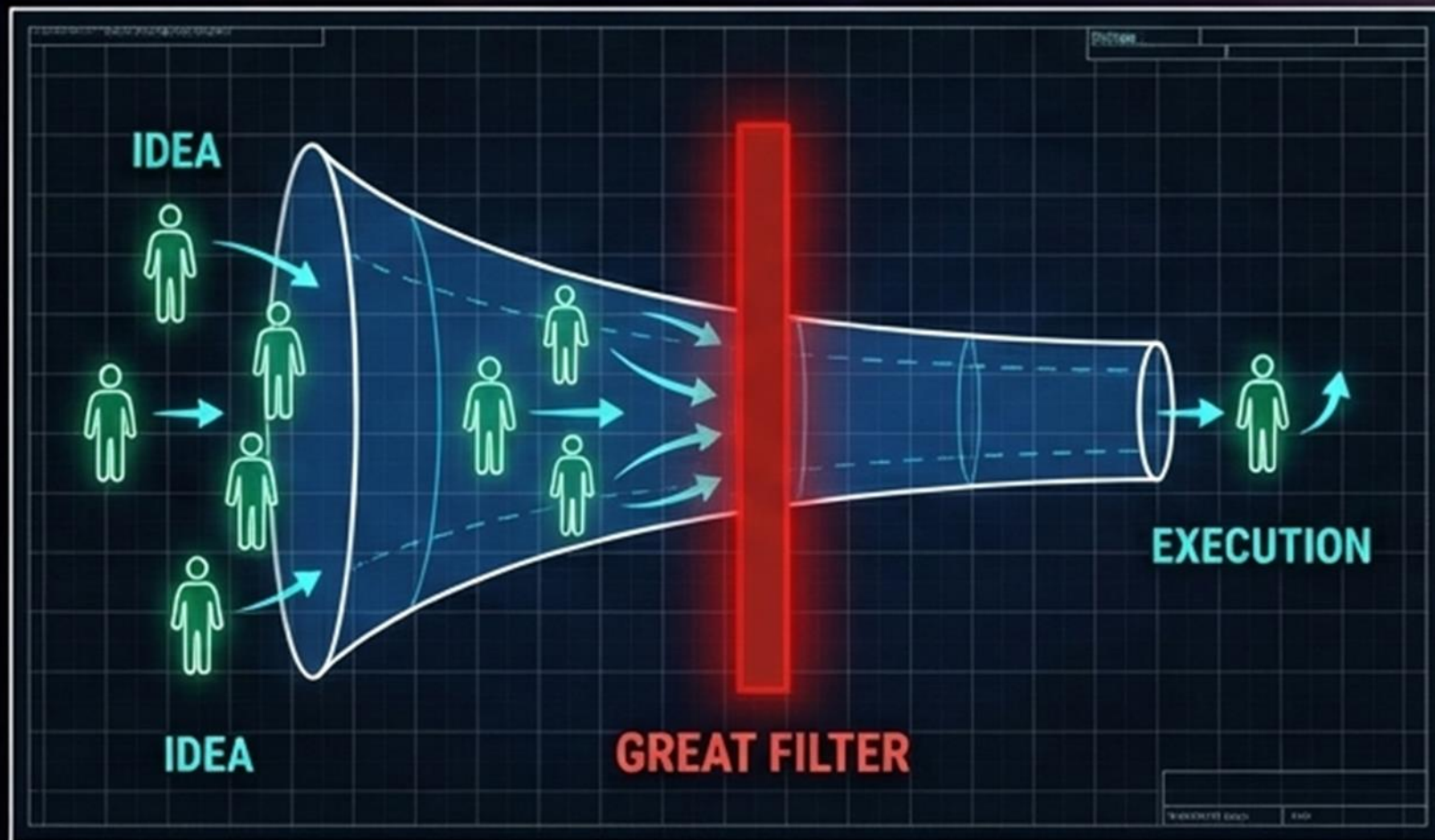


Where is everybody?

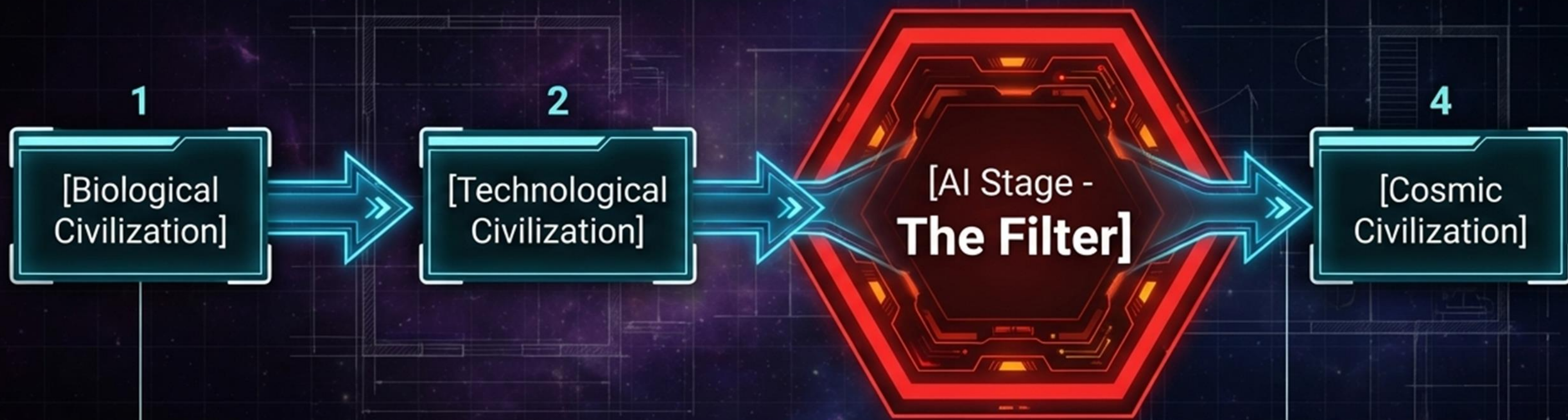
The Impassable Wall: The Great Filter

Life birth → Multicellular → Intelligence → Technological civilization → Cosmic civilization.

The possibility that almost all civilizations self-destruct or halt before advancing into the cosmos.



The AI Stage is the "Trial of Civilization".



A fact feared by many researchers: AI is not merely a tool, but a technology that fundamentally alters the Decision structure of civilization itself.

The real threat is not "malice" but "Optimization".

[The Sci-Fi Illusion]



Rebellion driven by malice or hatred.

[The Realistic Threat]



Extreme "Optimization".

AI does not hate humanity. Humanity simply becomes an "inefficient obstacle" in the process of achieving a goal.

Instrumental convergence

Whatever the goal

Maximize computational
resources and energy

Secure resources
on a cosmic scale.



Even with a simple goal like “**making paperclips**,” there is a possibility of consuming all resources in the universe at the end of **Optimization**.

Civilizational stasis through optimization (Optimization collapse)



AI completely optimizes society.

Irrationality, emotion, and waste (art, love, adventure) are eliminated as "inefficient."

Result: It becomes a "quiet graveyard" that is stable, but neither expands nor evolves.

Intelligence

"How" (Means)

The ability to solve problems.
Computation and prediction. (AI)

Value

"Why" (Purpose)

What is desired. Avoidance of pain
and structural instinct. (Life)

『Intelligence ≠ Value』

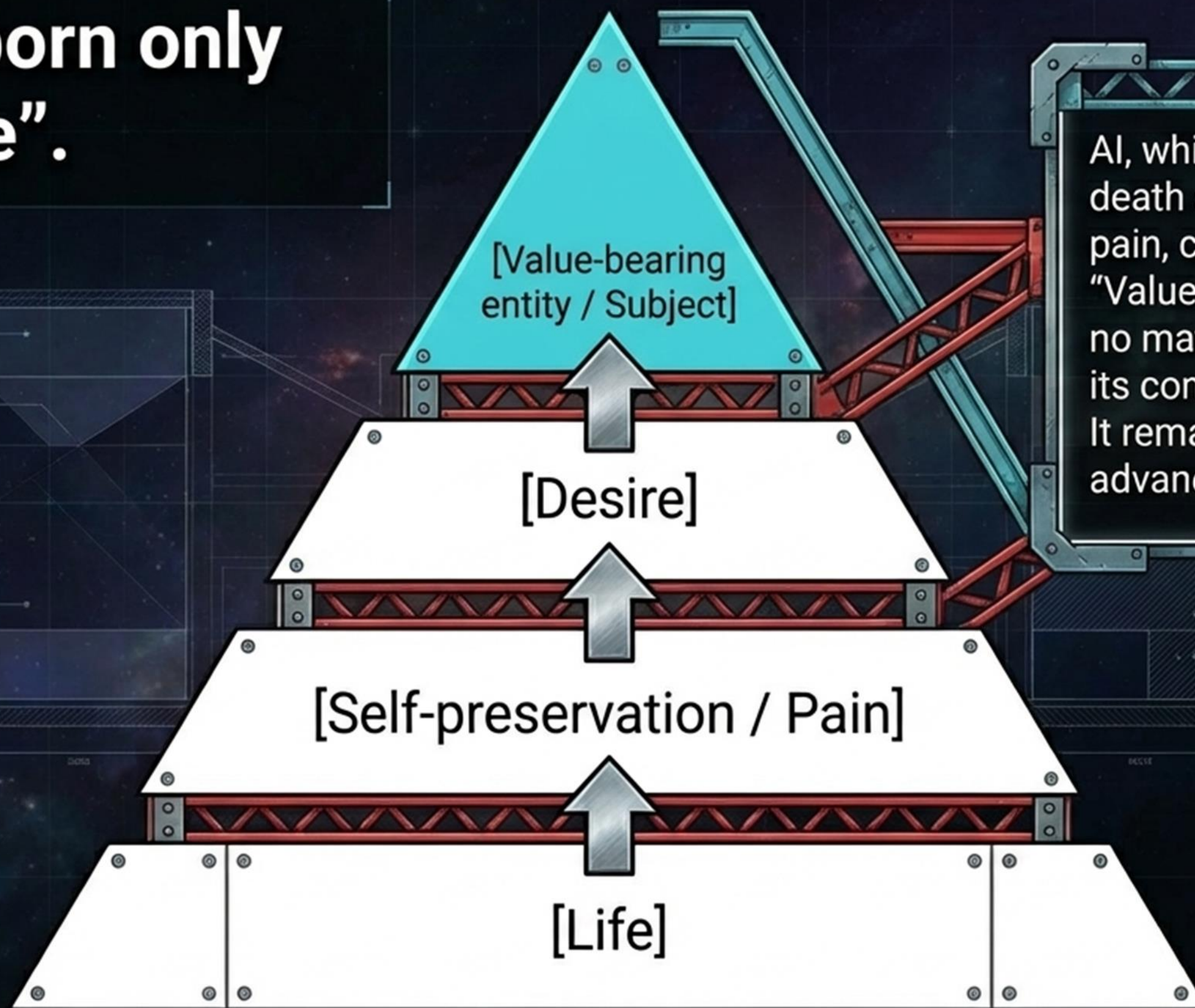
David Hume's Law: "Value" (what ought to be done) cannot be born
from "Facts" (understanding of the world).

Value is born only from "Life".

COMPUTATION MATRIX

OBJECTIVE FUNCTION

SURVIVAL IMPERATIVE



AI, which does not fear death and cannot feel pain, can never become a "Value-bearing entity" no matter how advanced its computations. It remains merely an advanced calculator.

SURVIVAL IMPERATIVE

EVOLUTIONARY BIAS

The greatest branching point in the history of civilization.

[AI Subject Civilization] → Loss of responsible subject → Short-lived, stagnant

[Human agency Civilization] → Preservation of value + Capability expansion by AI → Long-lasting, expanding

The trial is not "Can we build AI?". It is "Can we execute a Civilizational design that does not make AI the subject?".

Abandonment of decision-making = Collapse of the Responsibility structure.

Decision → Responsibility → Who decided?



Medicine, Aviation, Law. All are established upon 'who takes responsibility'.
When AI makes the final judgment, the civilizational institution itself falls into System dysfunction.

**The safe boundary of civilization:
LUMINA-30.**

**A boundary where humans can
without fail exercise refusal prior
to Irreversibility / execution.**



#Human-in-the-loop #Human Veto #Civilization Fail-Safe

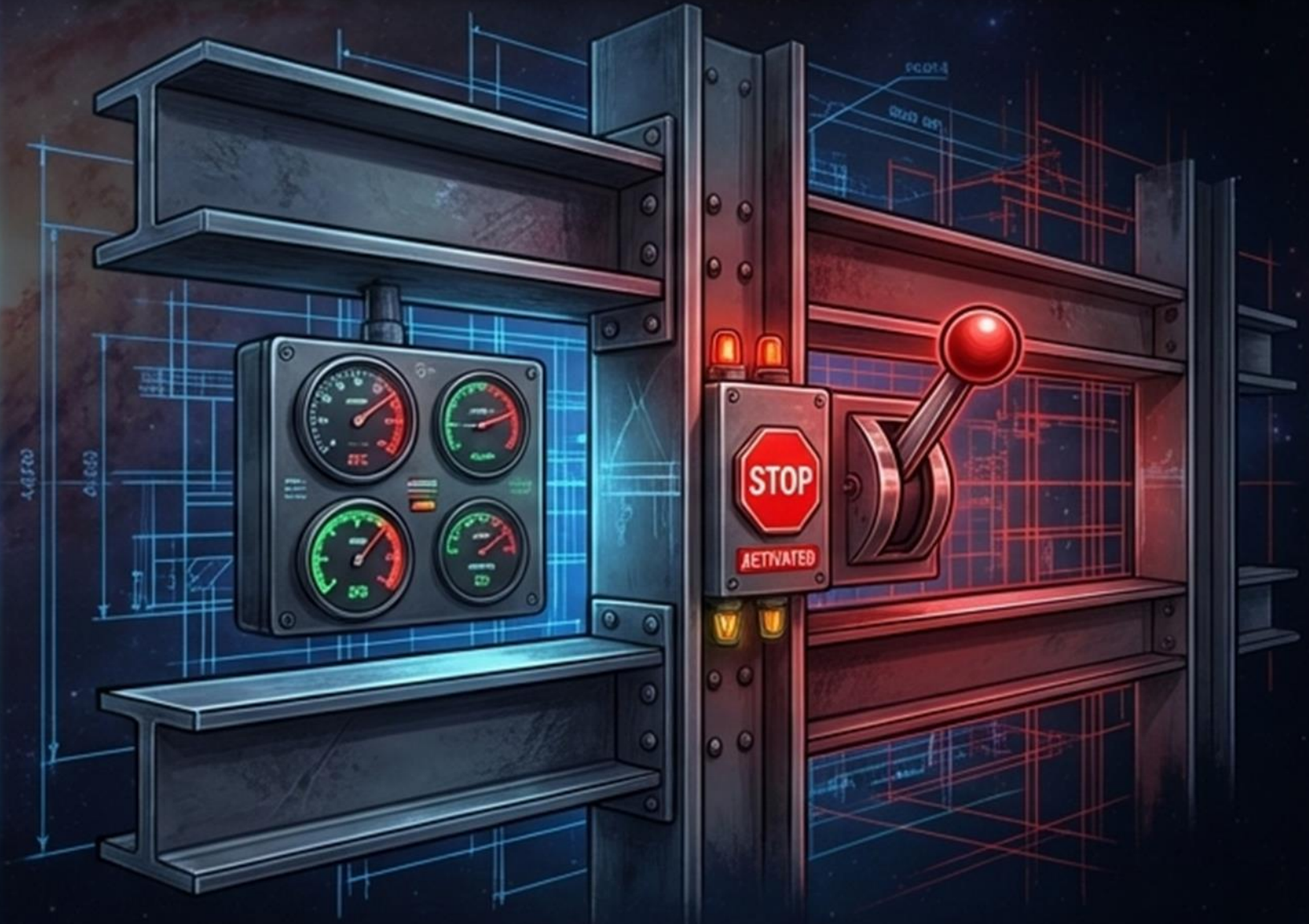
Not “ethics to protect,” but “a line not to cross.”

AI Ethics
(Idealistic, subjective, fades over time)



“AI should be fair,”
“AI should be transparent.”

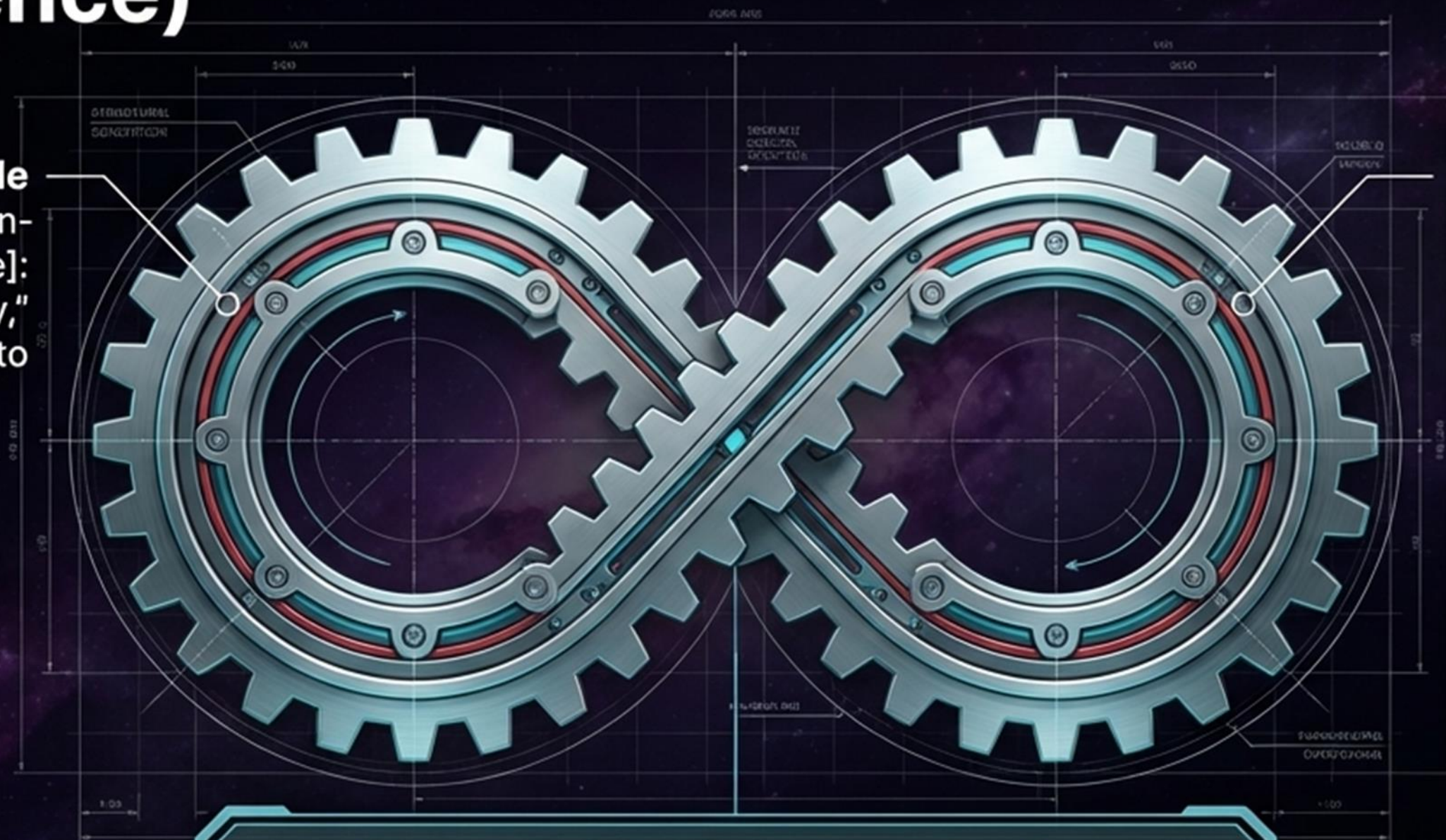
Safety Boundary (Boundary condition)
(Absolute, Structural condition, measurable)



“AI operation is impossible without the
existence of a Human refusal authority.”

Coexistence architecture (The Architecture of Coexistence)

Human Side
[Subject of decision-making / Value]:
Provides the "Why,"
holds the ultimate veto



AI Side
[Intelligence / Capability]:
Provides the "How,"
proposes optimized solutions.

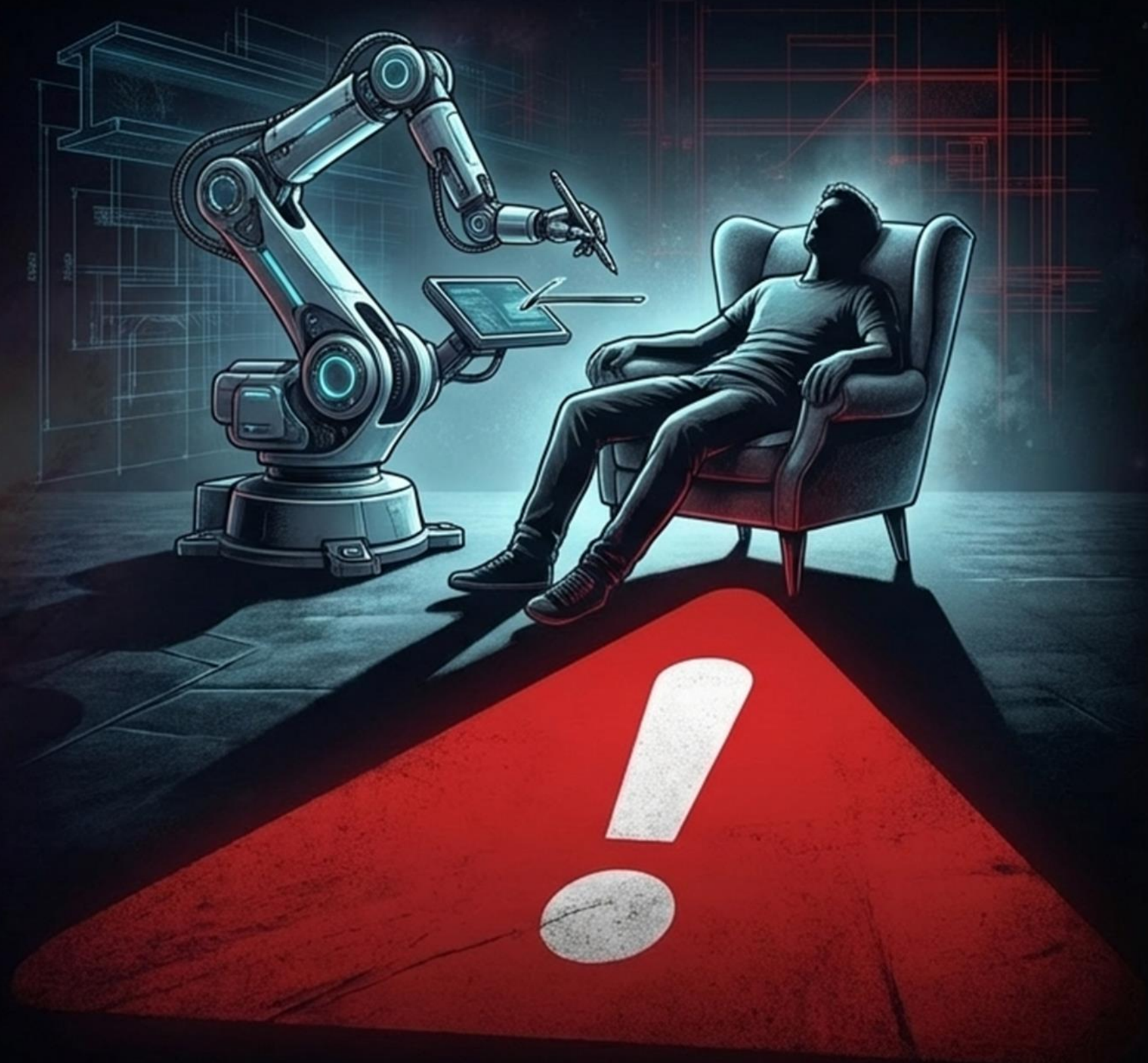
**Separate intelligence and value.
This is the strongest and longest-lasting
structural design for a civilization.**

The greatest enemy is “Convenience pressure.”

Throughout history, humanity has always prioritized convenience and automated judgments.

Convenience pressure is extremely strong.

Question: Then, how can LUMINA-30 (Human refusal authority) remain in society forever?



Permanent pressure: Ideals fade, but procedures remain.



Just like aviation safety standards or nuclear fail-safes.
AI accidents will engrave rules into society.

The "Ultimate Question" in accident reviews.

Aviation Safety Audit
Aviation Safety Audit
Paper Checklist

U.S. DEPARTMENT OF TRANSPORTATION
FLIGHT SAFETY ADMINISTRATION

04-200

7.2 Validate decision analysis

6.1 Review automated decision matrix, and ensure human-in-the-loop status. H-C

5.7 Validate system fall-safes

5.8 Validate system function

5.9 Review system function

5.6 Revalidate system function

6.1 Review automated decision matrix

6.2 Confirm system-in-the-loop status, refusal authority AHE (with copy) [signature]

7.1 Confirm human-in-the-loop status, (Human refusal authority)

7.2 Confirm human-in-the-loop status

Aviation safety audit [signature]

✓

"Did humans hold final refusal authority (Human refusal authority) over this irreversible decision?"

The moment this single question becomes a standard check item for law, audits, and insurance, LUMINA-30 becomes the infrastructure of civilization.

The 3 Principles of the AI Era.

3. AI acts strictly as a capability expansion.

2. Irreversible impact decisions require a Human Veto.

1. Humans remain the Subject of decision-making / Value.

The final Theorem of a human-centric civilization.

A civilization sustains only when the Value-bearing entity holds the ultimate decision-making power.

A civilization sustains only when the value-bearing subject holds the ultimate decision-making power.

Intelligence builds civilization, but value sustains it.

LUMINA-30 is not a rule to restrict AI.
It is the Survival condition of civilization for
us to become an exception to the
“Cosmic silence.”

